



Spring/Summer 2017

Local Trust | Big Local



North Meets South (NMS)

is by residents, with residents & for residents
of Marks Gate & north Chadwell Heath

www.nmsbl.org.uk



IN THIS ISSUE:

- Looking back
- Our journey with you
- Your priorities
- Dragon's Den returns!
- Community Heroes
- Dates to remember

LOOKING BACK

Welcome to North Meets South Big Local Spring/Summer newsletter. We have been very busy since our last newsletter with lots of activities for residents, mainly thanks to the successful Dragon's Den grants programme. Dragon's Den is where you, the community, vote on which projects get funding to put on fantastic activities for NMS residents.

Last time these included coach trips, creating a green haven, healthy cooking workshops, children's play equipment and Zumba. There's still BMX cycling and fitness classes to come. You can see pictures of some of the projects here.



Dragon's Den is back for 2017
and you can be part of it! Read on to find out how!



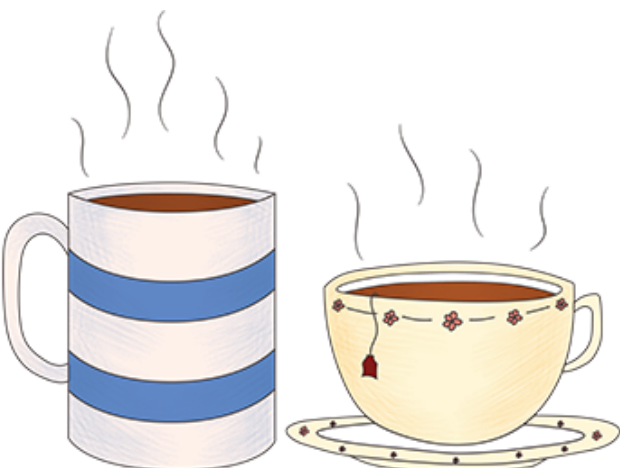


OUR JOURNEY WITH YOU

It's been a long, challenging road, making sure we listen to you while balancing the Big Local criteria. We commissioned consultants to ask your views on green spaces in our area and to talk with young people. We also held events to share our plans based on what you told us, to help us prioritise what's important to you.

We met with older residents at coffee mornings, groups, the café and out and about. We learnt there's still an interest in a bus service south of the A12 despite residents voting against a TfL service; and that you'd like us to talk to the Council about litter, lights, safety and benches. Older people are also keen to keep active with darts, chair-based exercise, short mat bowls, yoga, knitting, social singalongs or even pilates!

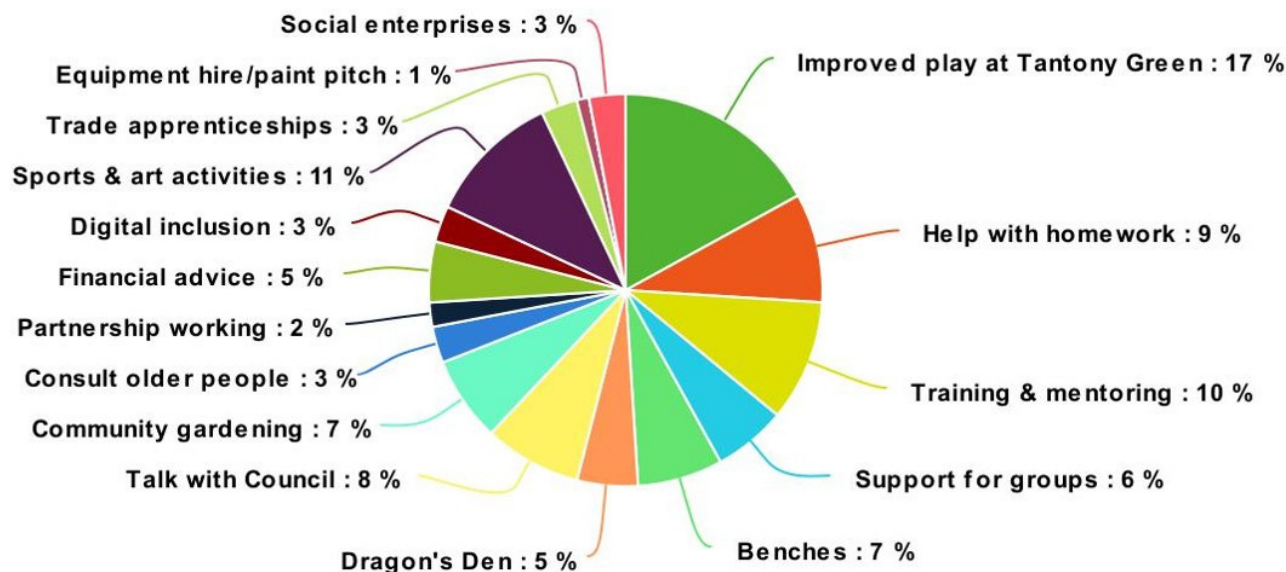
Have you visited the North Meets South website? It has lots of useful links and information: www.nmsbl.org.uk



COFFEE MORNING EVENT:

**Join NMS on Saturday
20 May, 10am–12pm, at
Eastern Avenue Baptist
Church hall to find out about
plans and activities**

YOUR PRIORITIES



Your top 3 priorities for action are:

1st: Improved play facilities at Tantony Green

2nd: Sports and arts activities for children and young people of all ages including holiday provision and youth work

3rd: Training, confidence building, mentoring and job preparation for people of all ages, supporting their progression to education, employment and enterprise



DRAGON'S DEN RETURNS!

It's Dragon's Den time again! It's a great chance to bring your community priorities to life!

Have an idea for a community project or know someone who does? Dragon's Den opens for grant applications Thursday 18 May and closes 5pm, Thursday 15 June. Then it's in the community's hands with the Dragon's Den voting event on Thursday 13 July, 12pm-8pm, at Marks Gate Community Centre.

To apply for a Dragon's Den grant, or if you are a local organisation that may be able to help deliver our top priorities, please contact Ola on 07419 285 839 or nmsworker17@gmail.com or visit www.nmsbl.org.uk



COMMUNITY HEROES

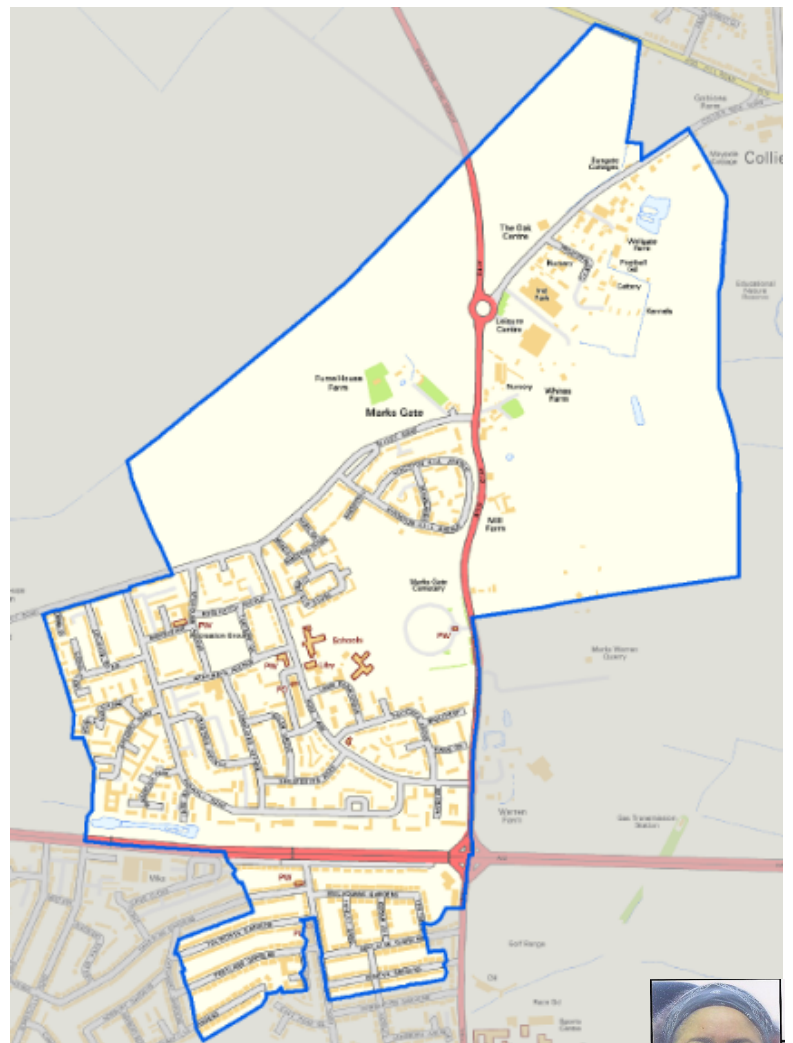
Do you have some spare time? Are you passionate about our community and area (see map)? How about volunteering as a Community Hero with NMS? Here are some of the ways:

- Helping at events/activities
- Facebook/twitter
- Taking photos
- Talking with people
- Newsletter writing/blogging
- Committee work

It's a chance to meet new people, and develop new skills and interests. Why not give Ola a call on 07419 285 839?

DATES TO REMEMBER

- **THURSDAY 18 MAY, 9am:**
Dragon's Den opens for grant applications
- **SATURDAY 20 MAY, 10am-12pm,**
NMS coffee morning - find out about plans:
Eastern Avenue Baptist Church Hall
- **THURSDAY 15 JUNE, 5pm:**
Deadline for Dragon's Den applications
- **THURSDAY 13 JULY, 12pm-8pm,**
Dragon's Den community voting event:
Mark's Gate Community Centre
- **SATURDAY 19 AUGUST, 11am-3pm:**
Summer event: Tantony Green



Want to get in touch with NMS?
Contact Ola on 07419 285 839
Email nmsworker17@gmail.com
Or ask at St Mark's Church cafe

North Meets South (NMS)
 is by residents, with residents & for residents
 of Marks Gate & north Chadwell Heath
www.nmsbl.org.uk